

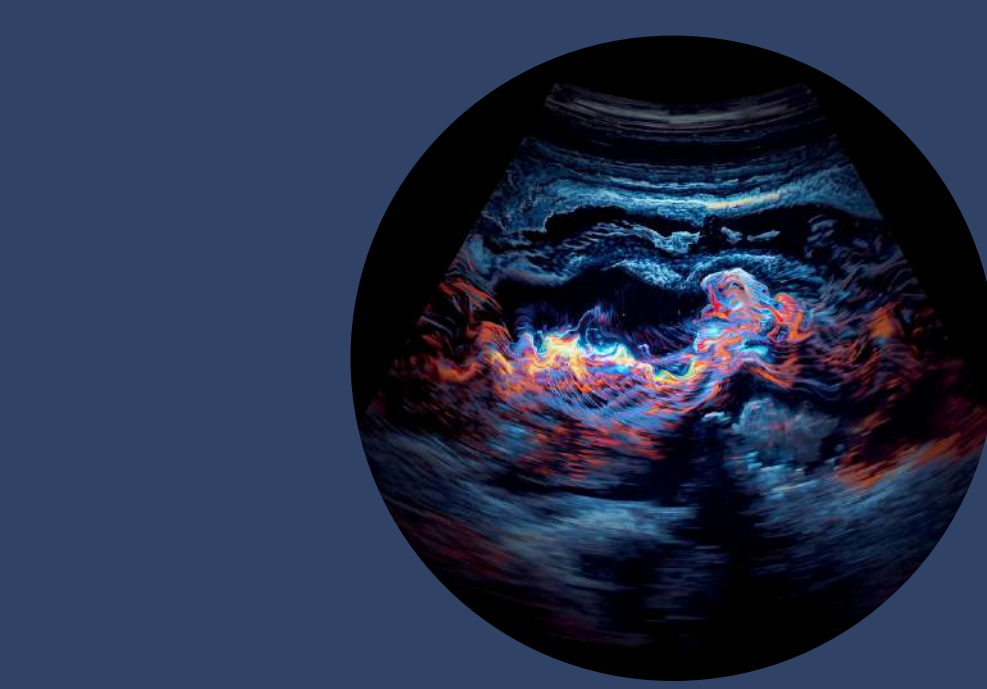
Castle Ultrasound Course

SEE MORE. DIAGNOSE BETTER.

JUNE 10-11, 2026

COURSE OVERVIEW

Join top international instructors from the USA, UK, and Belgium for a hands-on ultrasound course designed for physicians. This two-day program offers Basic and Advanced modules, combining practical skills with cutting-edge knowledge.



MODULES

BASIC	ADVANCED
Vascular	Renal ultrasound
RUSH (Rapid Ultrasound in Shock & Hypotension)	Advanced TTE
eFAST (Extended Focused Assessment with Sonography in Trauma)	Lung ultrasound
AAA (Abdominal Aortic Aneurysm)	Hemodynamics (VTI, VEXUS, etc.)
TTE (Transthoracic Echocardiography)	Gallbladder ultrasound

WHY ATTEND?



Interactive sessions with top international instructors



Hands-on training with real cases and simulations



Exclusive networking in a unique castle setting



Certificate of participation (accreditation provided)

COURSE FEE

RESIDENTS

EUR 980

EXPERTS

EUR 1,225

THESE RATES ARE INCLUSIVE OF:



OVERNIGHT STAY



BREAKFAST



LUNCH/DINNER/DRINKS



OPTIONAL EVENING & MORNING ACTIVITY

SEE YOU THERE!

CONTACT / ENQUIRIES

REGISTER NOW



EVENT LOCATION:
Heerlijckyt van Elsmeren
EVENT ORGANIZER:
EMUST vzw